

West River BUILD Project Multimodal Network and Safety Improvements

Segment 2 Pre-Construction Meeting

12/4/2025

*City of
Tampa
Florida*





Guiding Principles

This project is an opportunity to **leave a lasting impression upon the City of Tampa** landscape.



Continuity of Experience & Placemaking



Complete Streets Design: Vision Zero/Safe Systems Approach (Low Stress Network)



Integrated Design-Build Delivery



Equal Access and Outreach

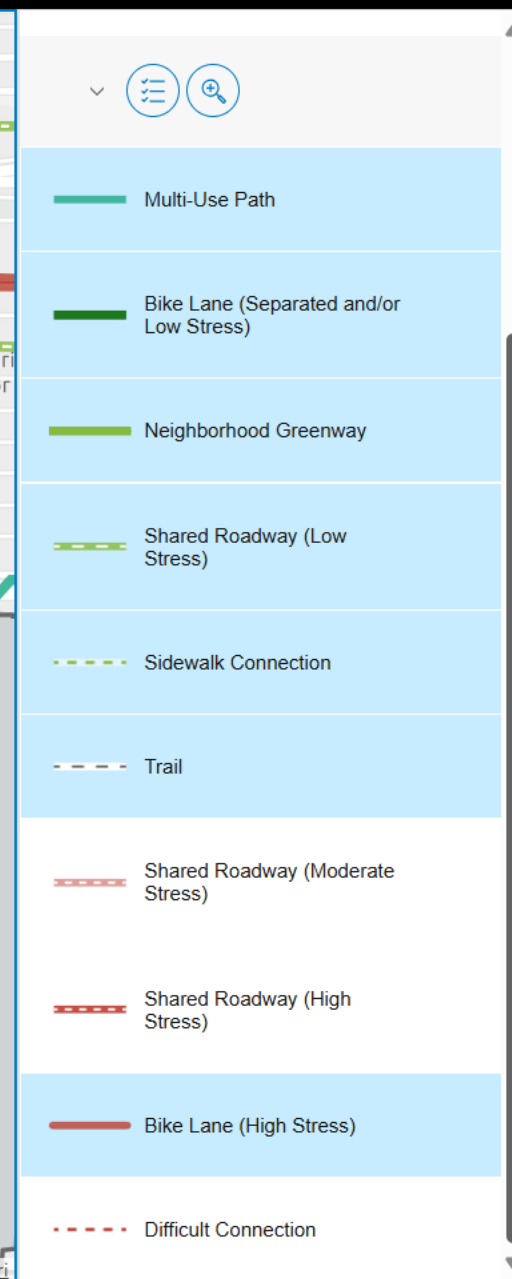
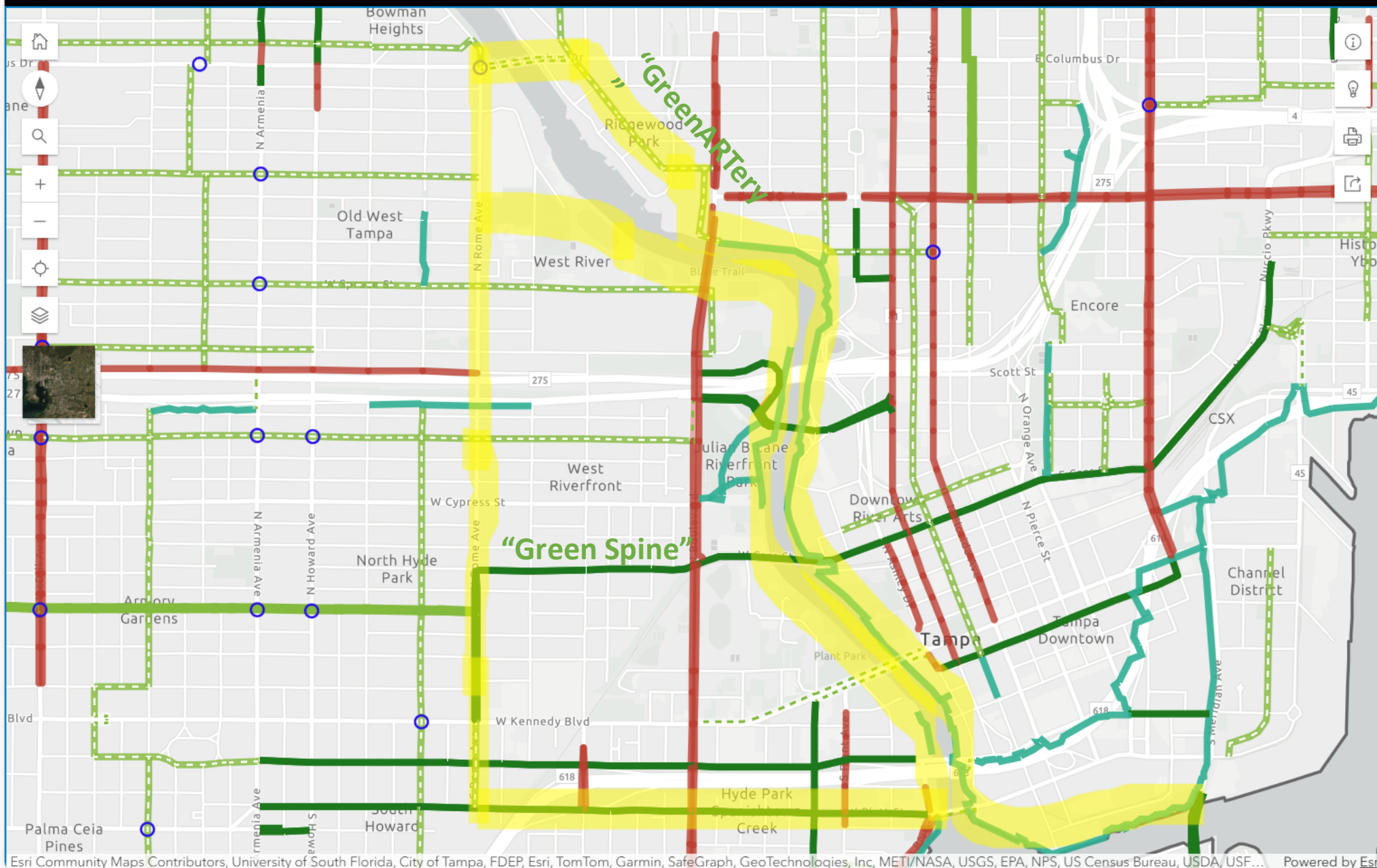




Vision & Future Activation



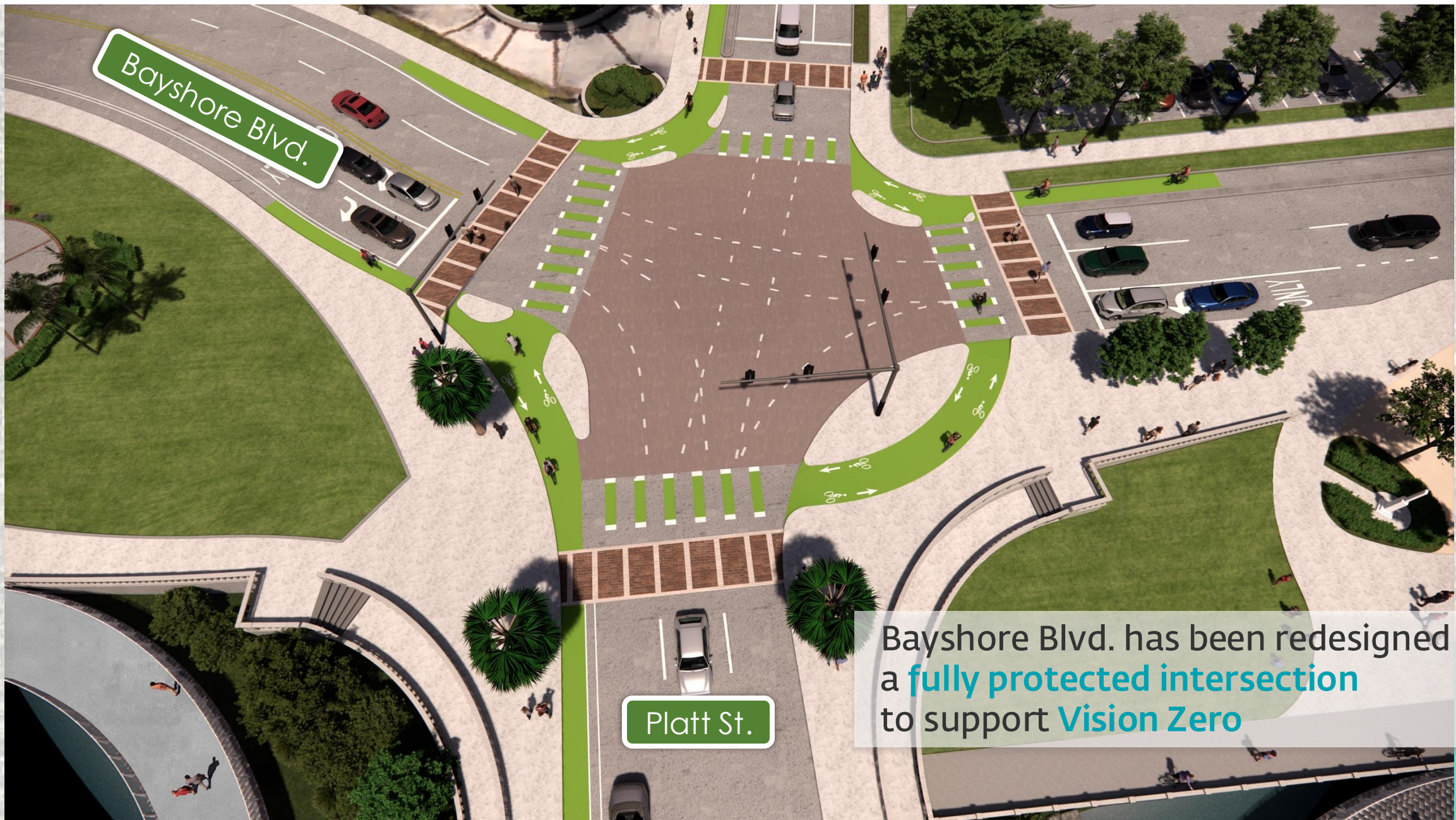
"Building the Network"





Bayshore Linear Park
expansion to connect
to trail

Platt St. and Jannus Park



Bayshore Blvd.

Platt St.

Bayshore Blvd. has been redesigned as a **fully protected intersection** to support **Vision Zero**



Platt Street Pedestrian Underpass Bridge

West Riverwalk at Tony Jannus Park





UTampa

View From Blake H.S. to Armature Works



“Knit” West Tampa to River Walk including new gateway/trailhead at Palmetto and Rome

Rome Ave. and Chestnut St. [Today](#)



Rome Ave. and Chestnut St. **Complete Street**



Ridgewood Park

Complete Streets aren't complete without trees.

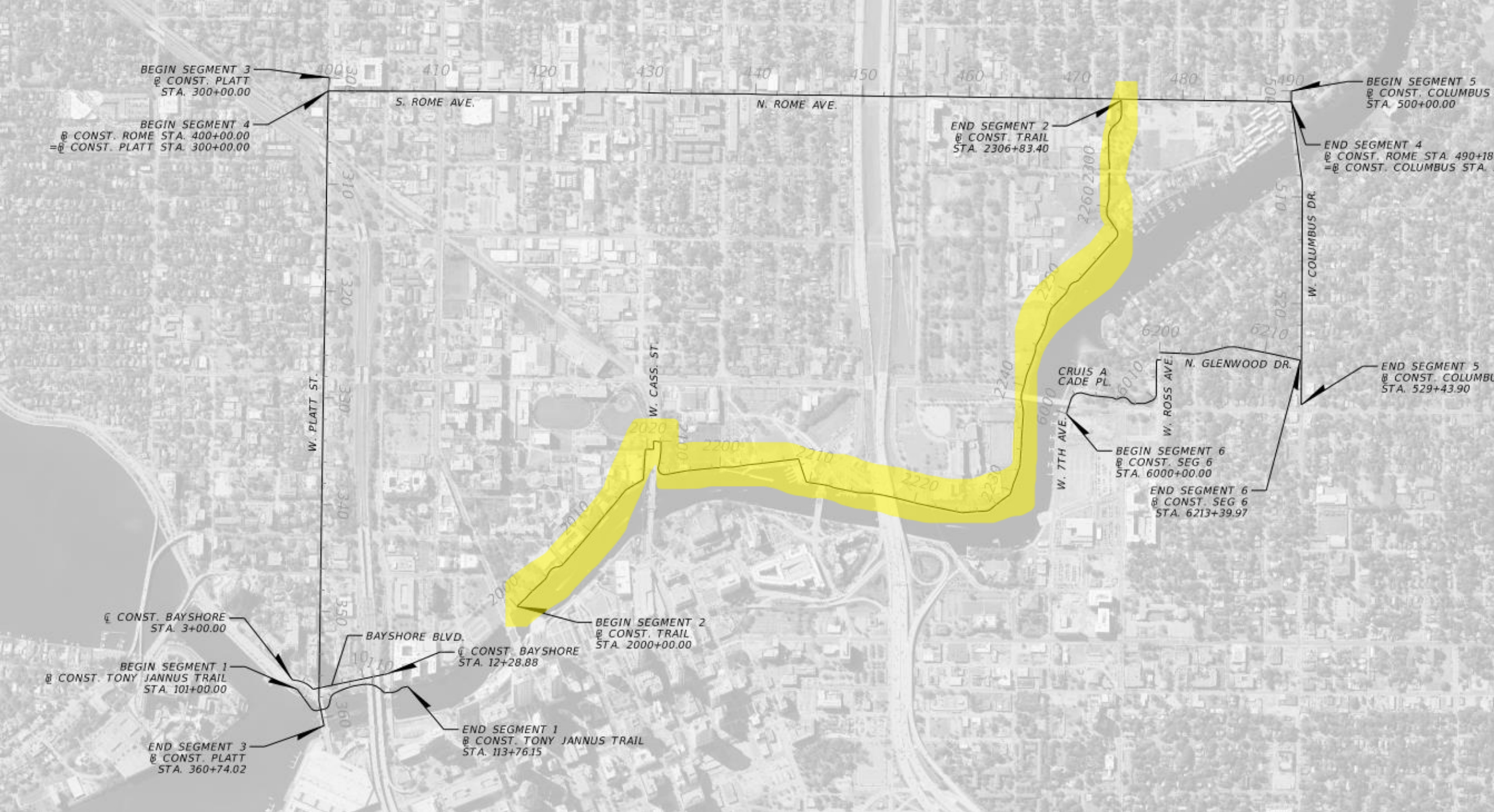


Promote **equal access to shade**
and **beautification**

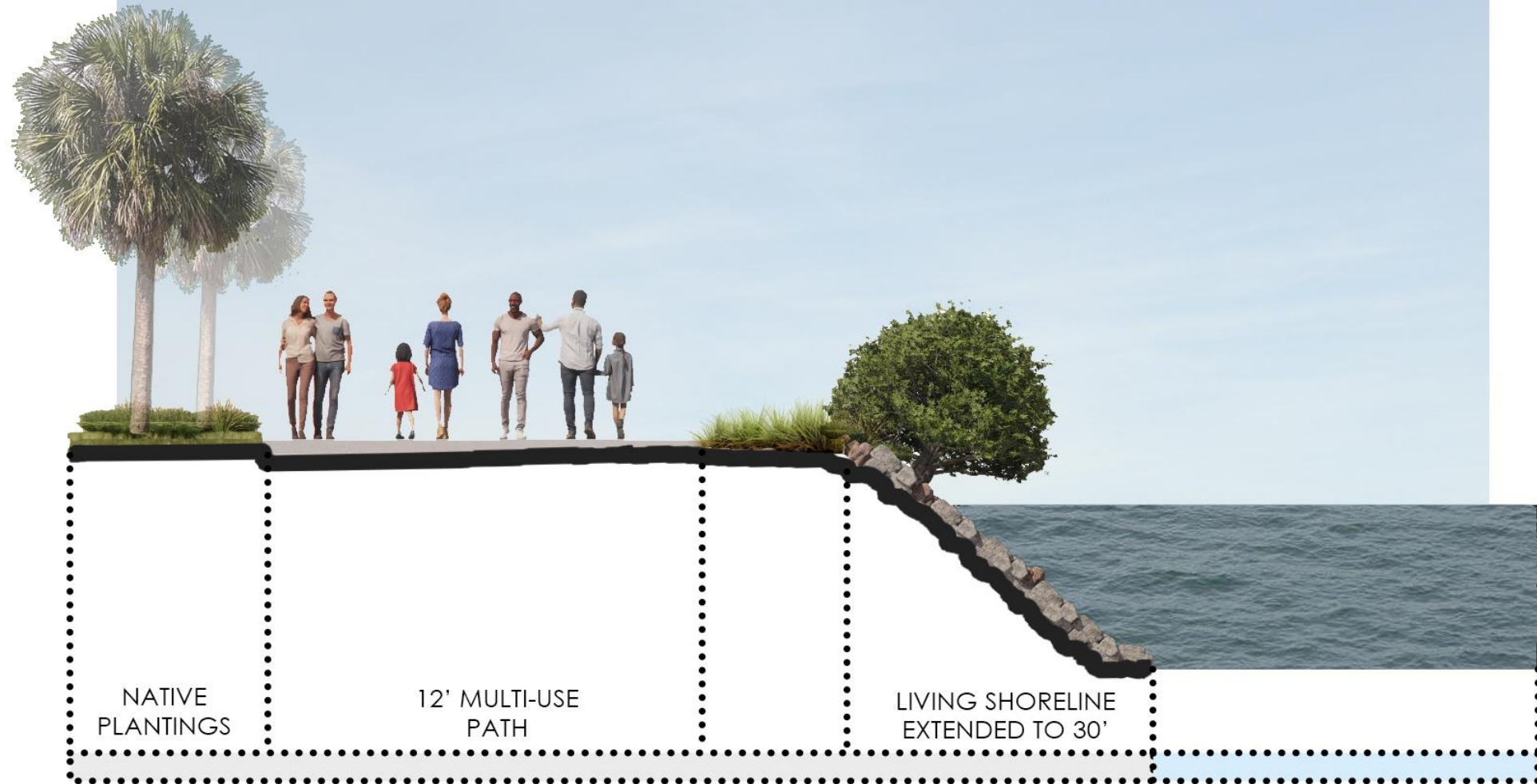
 TREE LEGEND	RFP Req.	Approved Scope
	15	25
 Understory Tree	20	30

Segment 2

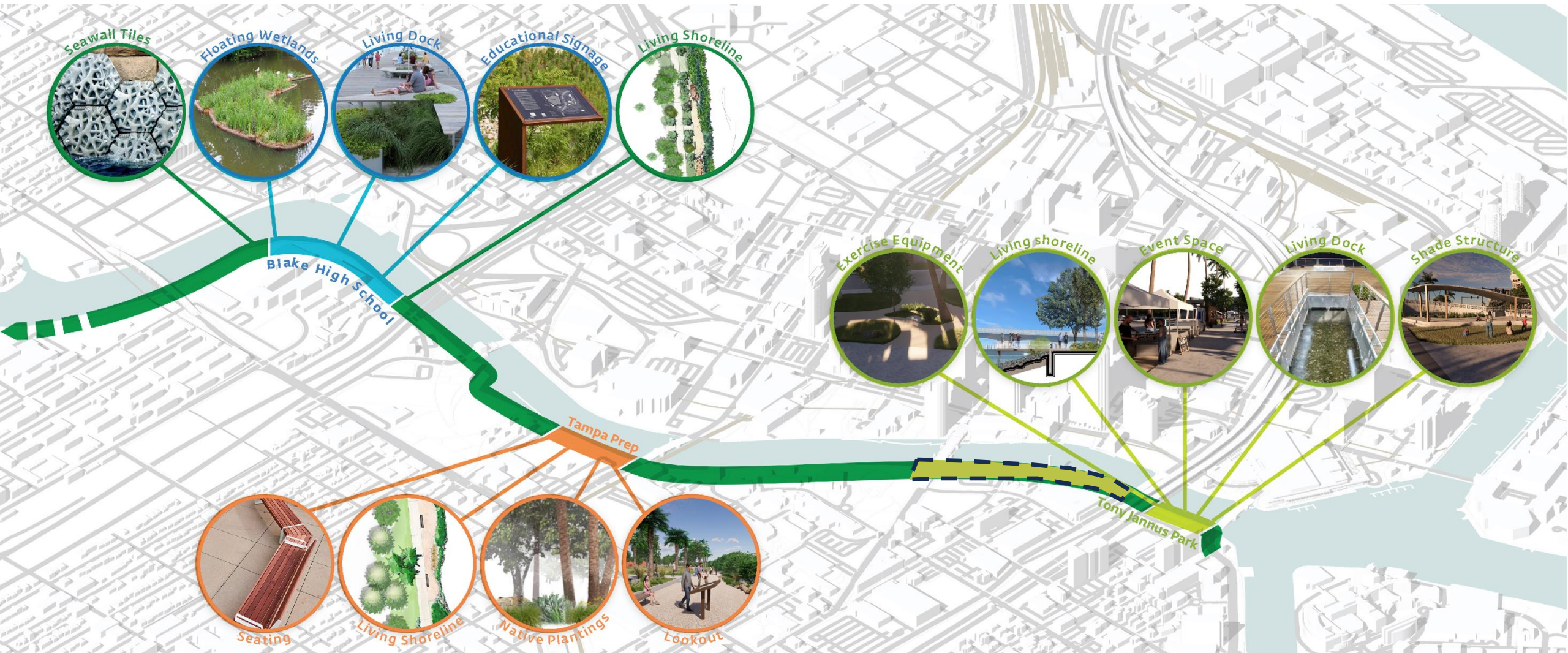




Trail Design



Moments of Impact



Living Shorelines Design Intent



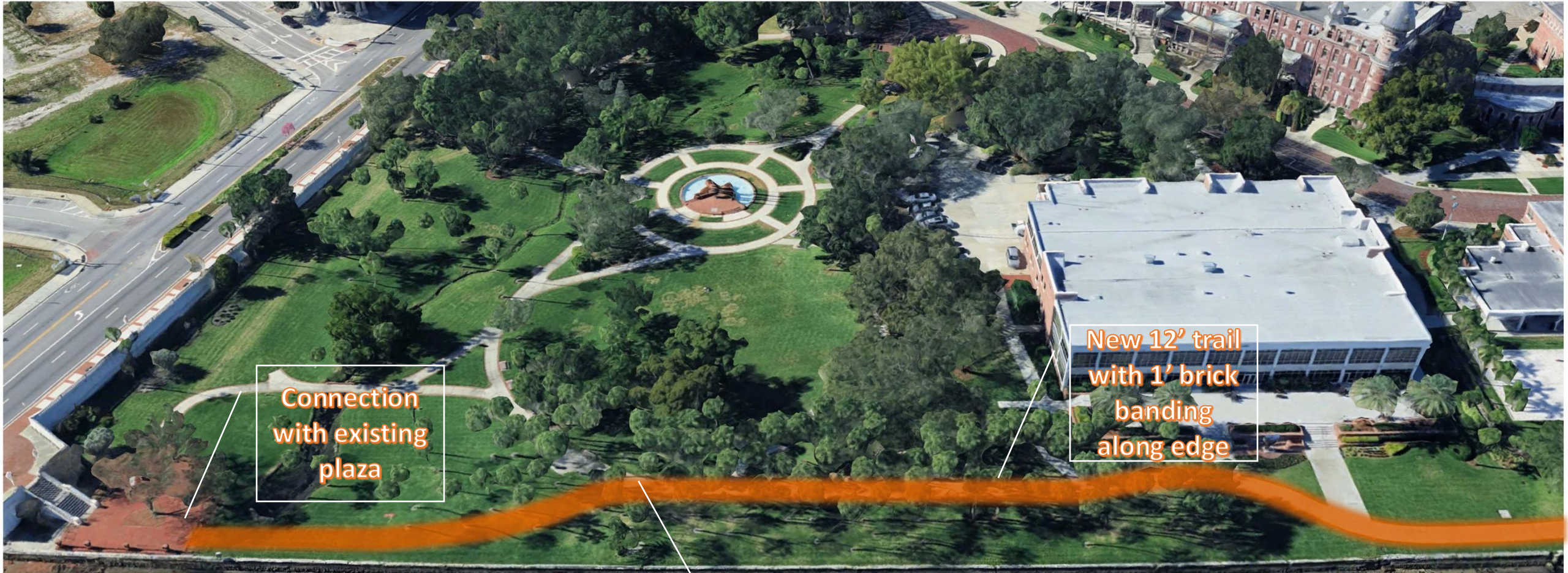
Resiliency



Wave Dissipation



*Public Access and
Interaction*



Connection
with existing
plaza

New 12' trail
with 1' brick
banding
along edge

New Lighting
throughout
trail

Let's take a walk!



Plant Park (Future Interface w/private developer at the Brick Plaza)



**New lighting
throughout
trail**

**New 12' trail
with 1' brick
banding
along edge**



UTampa at Night



Proposed
gate (likely
closed 12A-
5A

Widened
median
refuge and
RRFB

Sidewalk
connection

Retaining
wall &
fencing

New 12' trail
with 1' brick
banding
along edge

New lighting
throughout
trail

Begin living
shoreline at
Tampa Prep



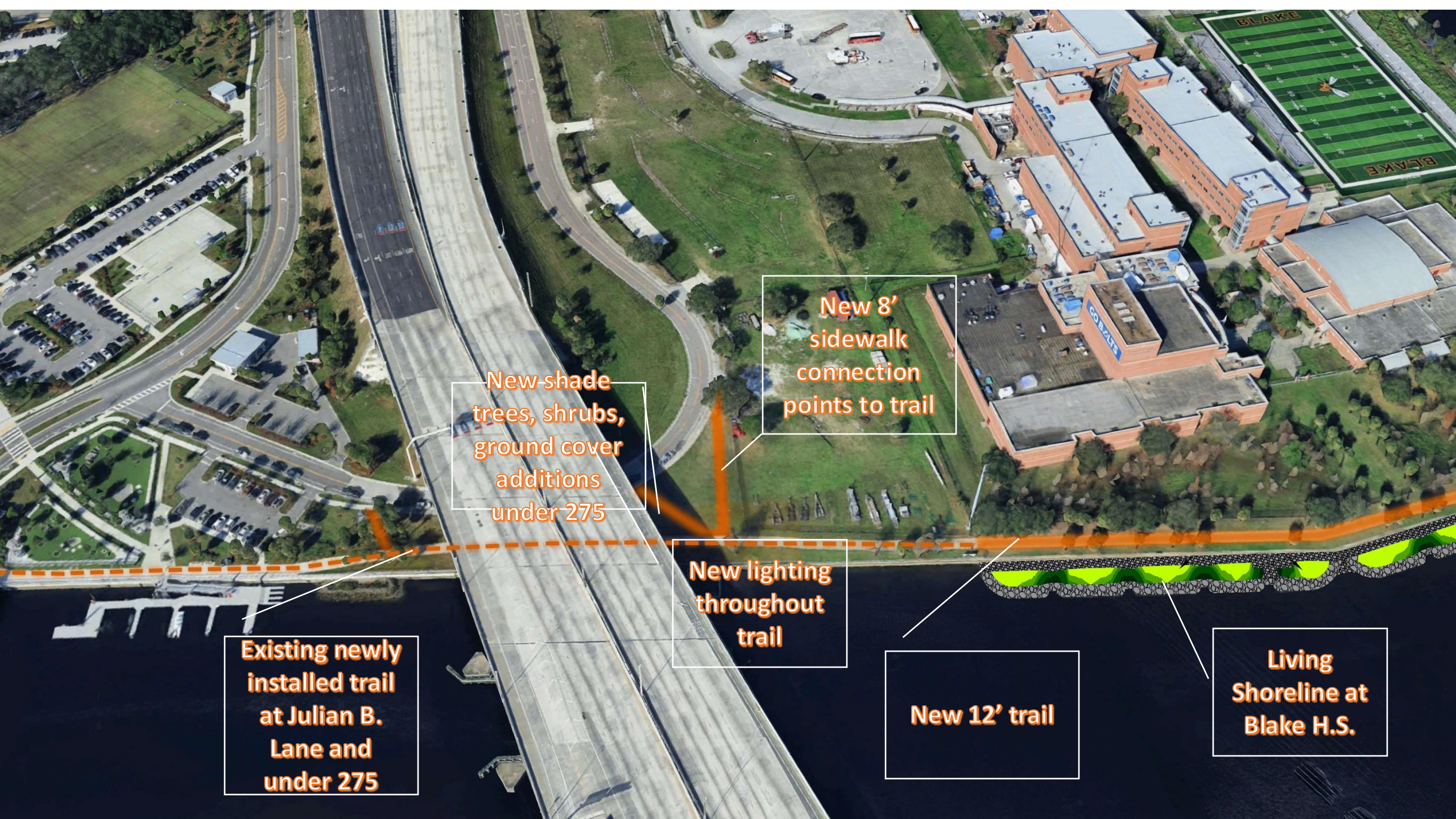
**Living
Shoreline and
Habitat Panels
at Tampa Prep**

**New lighting
throughout
trail**

**Existing newly
installed trail
at Julian B.
Lane**

Mangrove Reef wall – “habitat panels”





New 8'
sidewalk
connection
points to trail

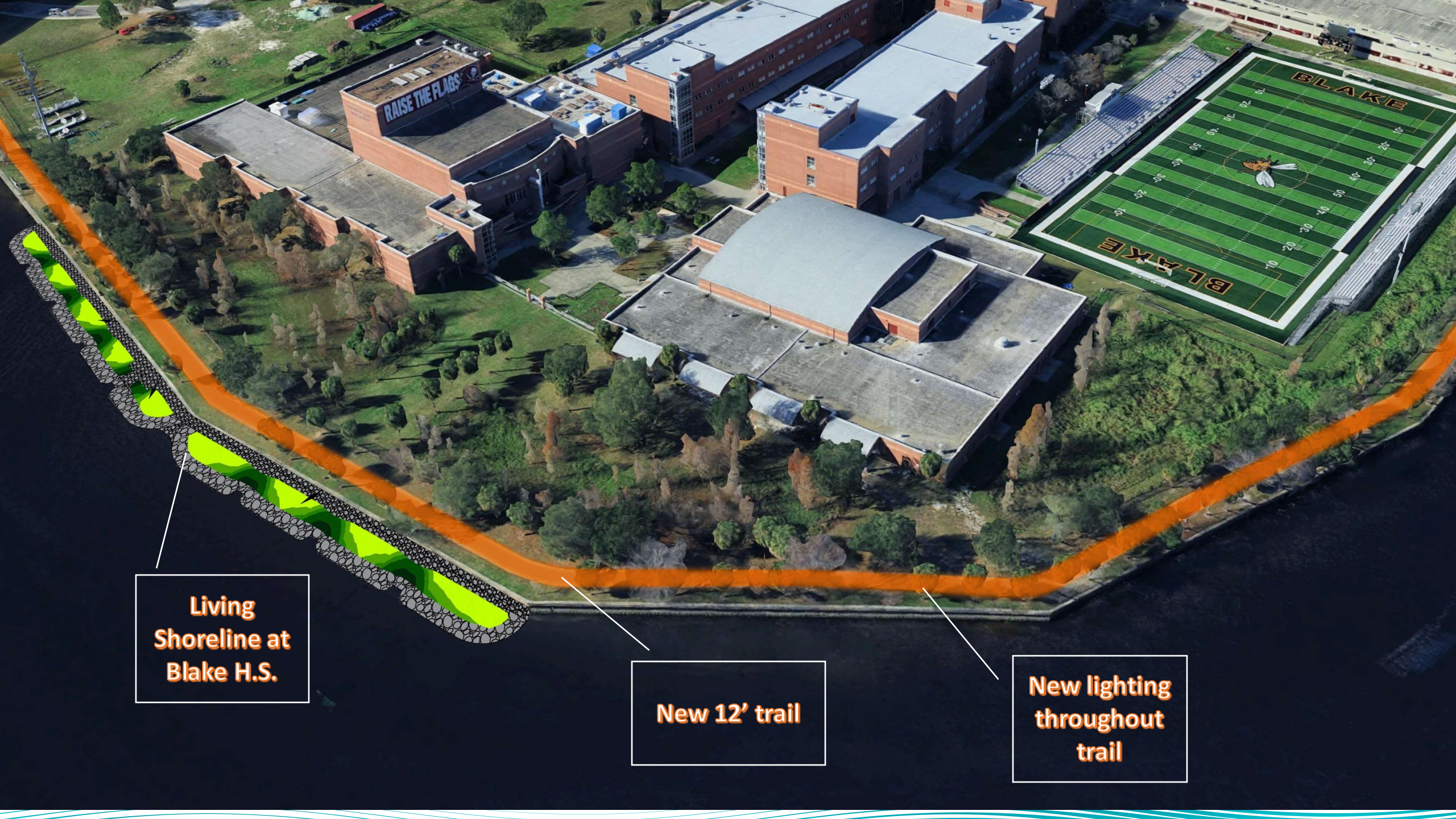
New shade
trees, shrubs,
ground cover
additions
under 275

New lighting
throughout
trail

Existing newly
installed trail
at Julian B.
Lane and
under 275

New 12' trail

Living
Shoreline at
Blake H.S.



**Living
Shoreline at
Blake H.S.**

New 12' trail

**New lighting
throughout
trail**

View From Blake H.S. to Armature Works





**Existing
recently
installed trail
at Blake H.S.**

**New lighting
throughout
trail**

New 12' trail



Rome Yards
Development
and trail
connection

New 12' trail

New lighting
throughout
trail



Rome Yards
Development
and trail
connection

New 12' trail

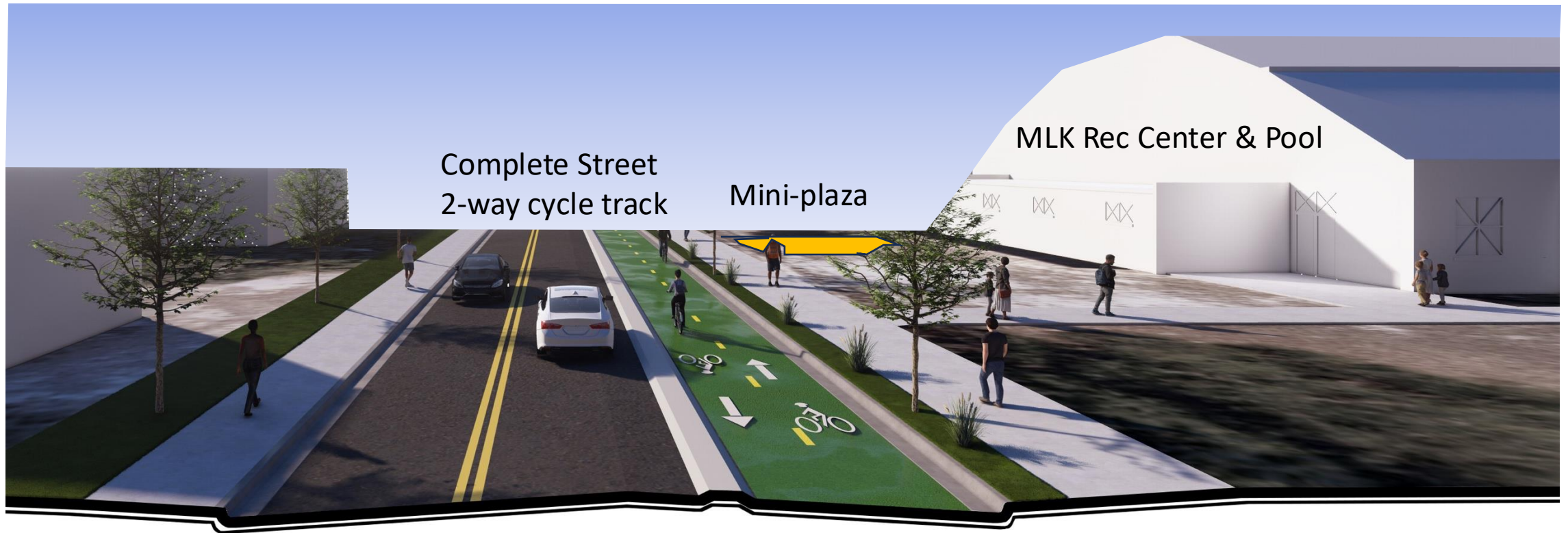
New RRFB
Crossing at
Oregon

MLK Center
Trail with
new
sidewalk
connections

Trailhead at
Palmetto/Ro
me Ave.

New lighting
throughout
trail

Trailhead @ MLK Rec Center & Rome Av



Future Activation Concept



Rome Ave. and Chestnut St. **Complete Street**

Future Activation Concept

Public Engagement



Project Website and App– westriverbuild.com





Project Schedule & MOT



Project Schedule

Segment 1: Demo mid-Nov '25 start

Segment 1: Living Shorelines Dec '25 start

Segments 2, 3, 6: Jan/Feb '26 start

Segment 4 + Bridges: Feb/Mar '26 start

Segment 5 + Bridges: May/Apr '26 start



In-Water Permitting Status

- ✓ *Living Shorelines – permit received*
- ✓ *Bridge Underpasses & Overlook (Q1 - 2026)*

Maintenance of Traffic (AKA The challenging task of pleasing everyone while keeping everybody safe!)

Maintenance of Traffic (MOT) is a critical process that involves establishing temporary traffic control measures to ensure the safety of both road users and construction workers during roadwork or maintenance activities. It aims to minimize disruptions while maintaining safe travel conditions for motorists, pedestrians, and cyclists.

- Maintain min 5' sidewalk path along proposed detour routes
- Closure of sidewalks not permitted during week of Gasparilla, Children's Parade, and Gasparilla Day parade
- No closure of SW's on Bayshore when special events on Bayshore
- Will coordinate with special events office to address any potential conflicts in advance
- Temporary signage, portable changeable message signs, and erosion/sediment control devices during construction
- Sections of existing SW's connecting to or adjacent to trail closed during construction
- Maintain 10' travel lanes on Cass St. during construction

A photograph of the Tampa skyline featuring several prominent skyscrapers like the SunTrust Tower and Wells Fargo building. A blue geometric overlay with curved lines is positioned across the middle of the image. The text "Thank you!" is centered in white with a drop shadow.

Thank you!

*City of
Tampa
Florida*

