







# Vision & Future Activation





## Guiding Principles

This project is an opportunity to **leave a lasting impression upon the City of Tampa** landscape.



*Continuity of Experience & Placemaking*



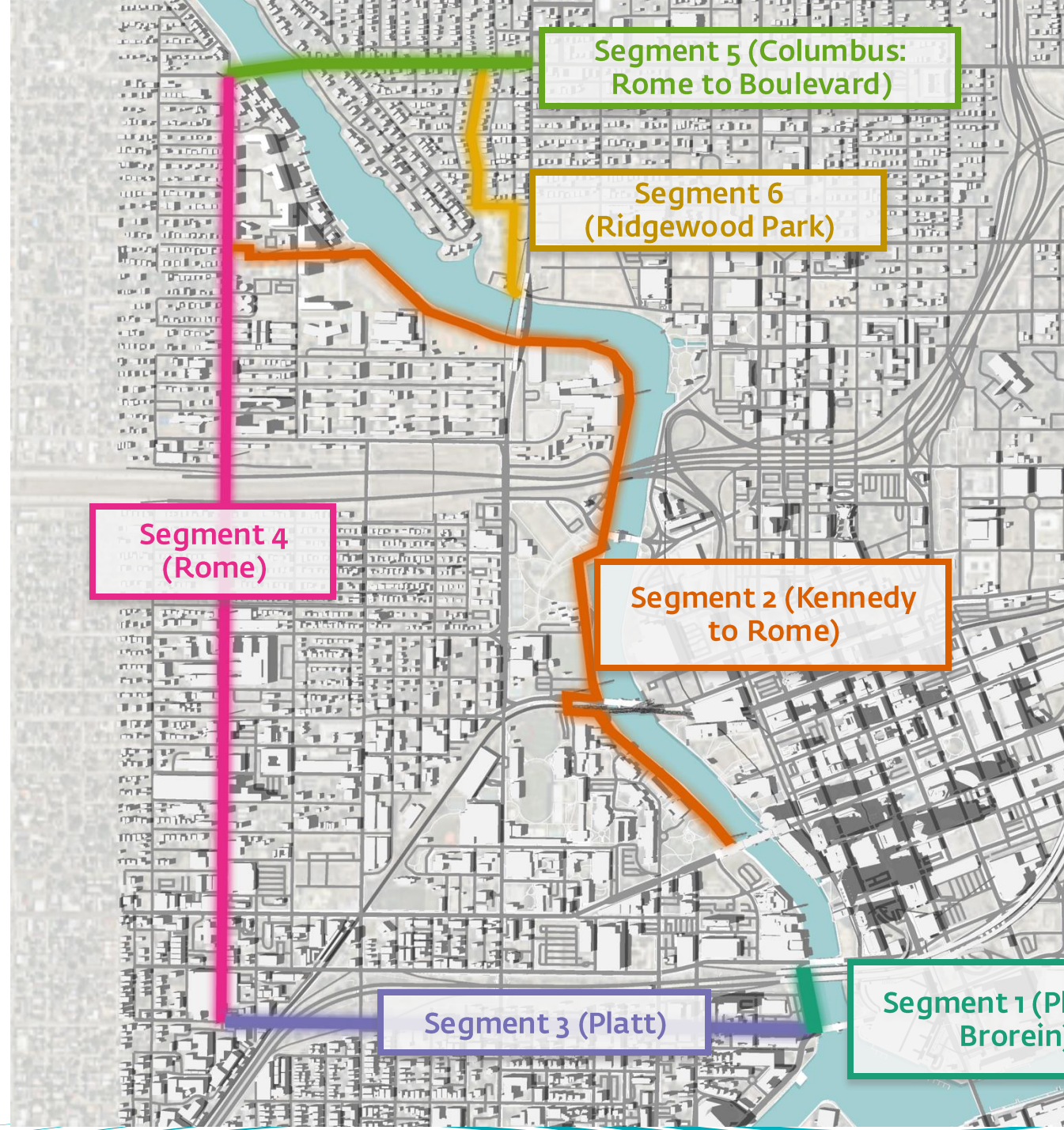
*Design: Vision Zero/Safe Systems Approach*



*Integrated Design-Build Delivery*



*Equity, Collaboration and Outreach*







Platt St. and Jannus Park





Platt St. Protected Intersection





Platt Street Pedestrian Underpass Bridge





Jannus Park Community Events (Future Activation)



# Complete Streets

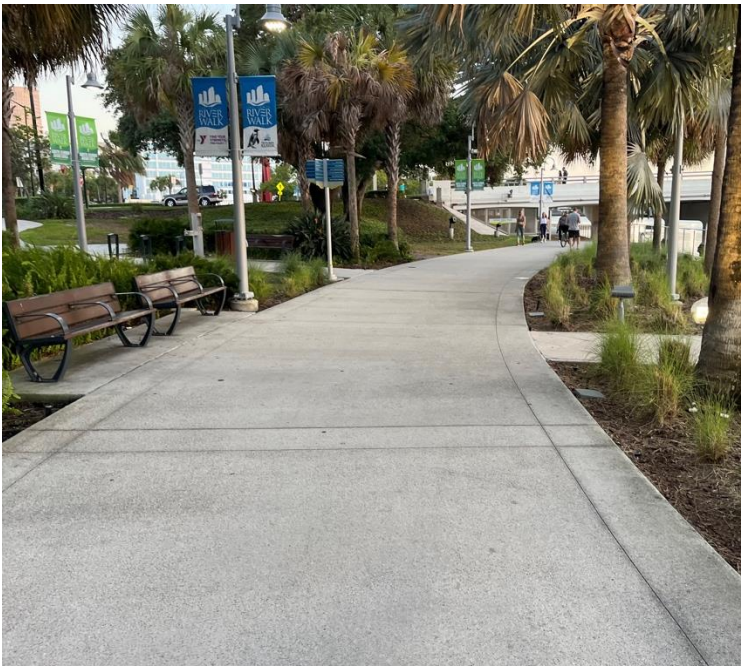




## Complete Streets

Adds multimodal Bicycle and Pedestrian features to public rights-of-way while calming vehicular traffic.

- ~ Support City's Vision Zero program with intentional design solutions rooted in NACTO standards.



**Low Stress  
Environment**



**Intentional  
Design Solutions**



**Placemaking**





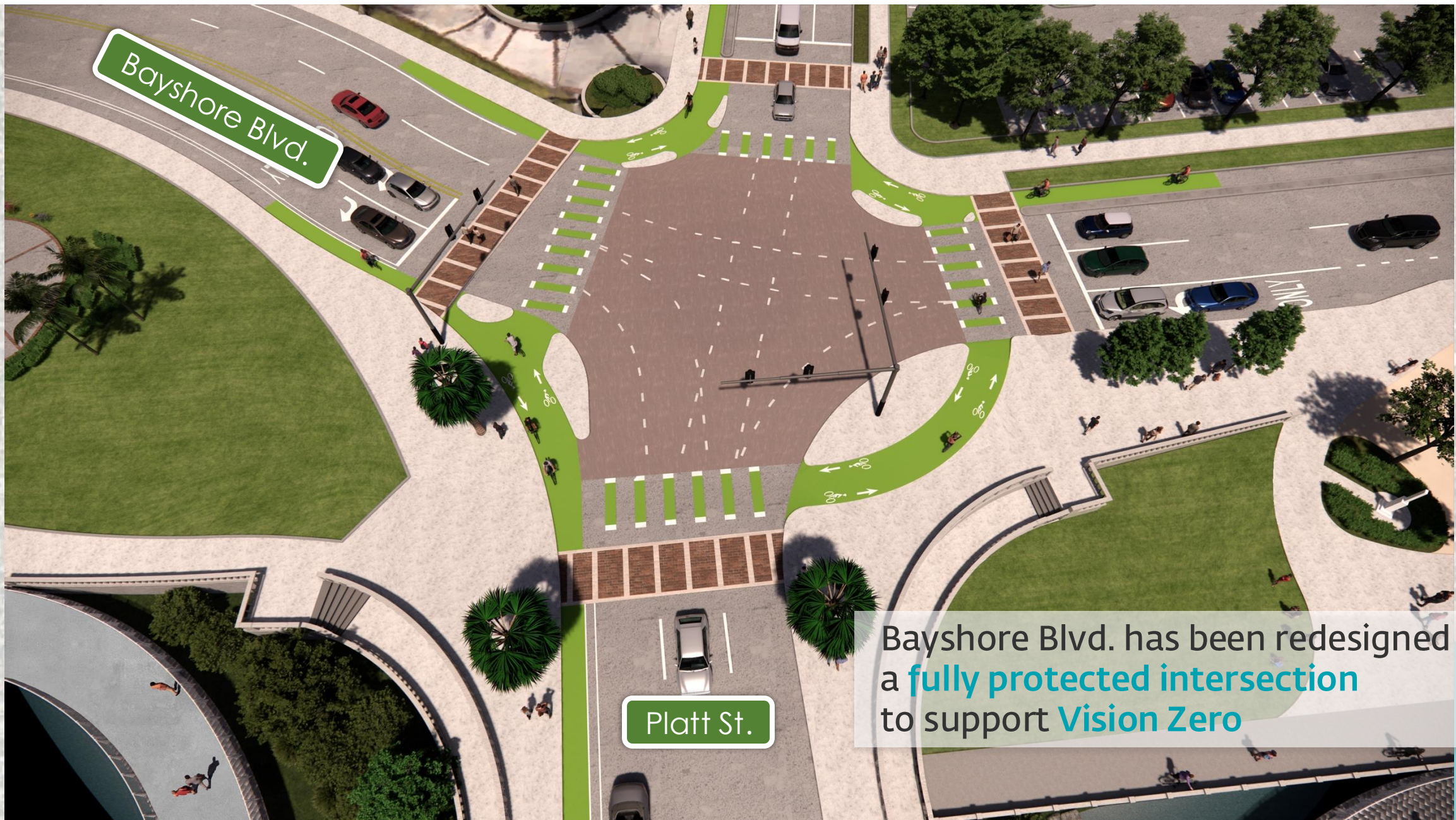
Rome Ave. and Chestnut St. **Today**





Rome Ave. and Chestnut St. **Complete Street**





Bayshore Blvd. has been redesigned as a **fully protected intersection** to support **Vision Zero**



# Complete Streets Tree Planting



Promote **equal access to shade**  
and **beautification**



TREE LEGEND	RFP Req.	Approved Scope
Canopy Tree	15	25
Understory Tree	20	30

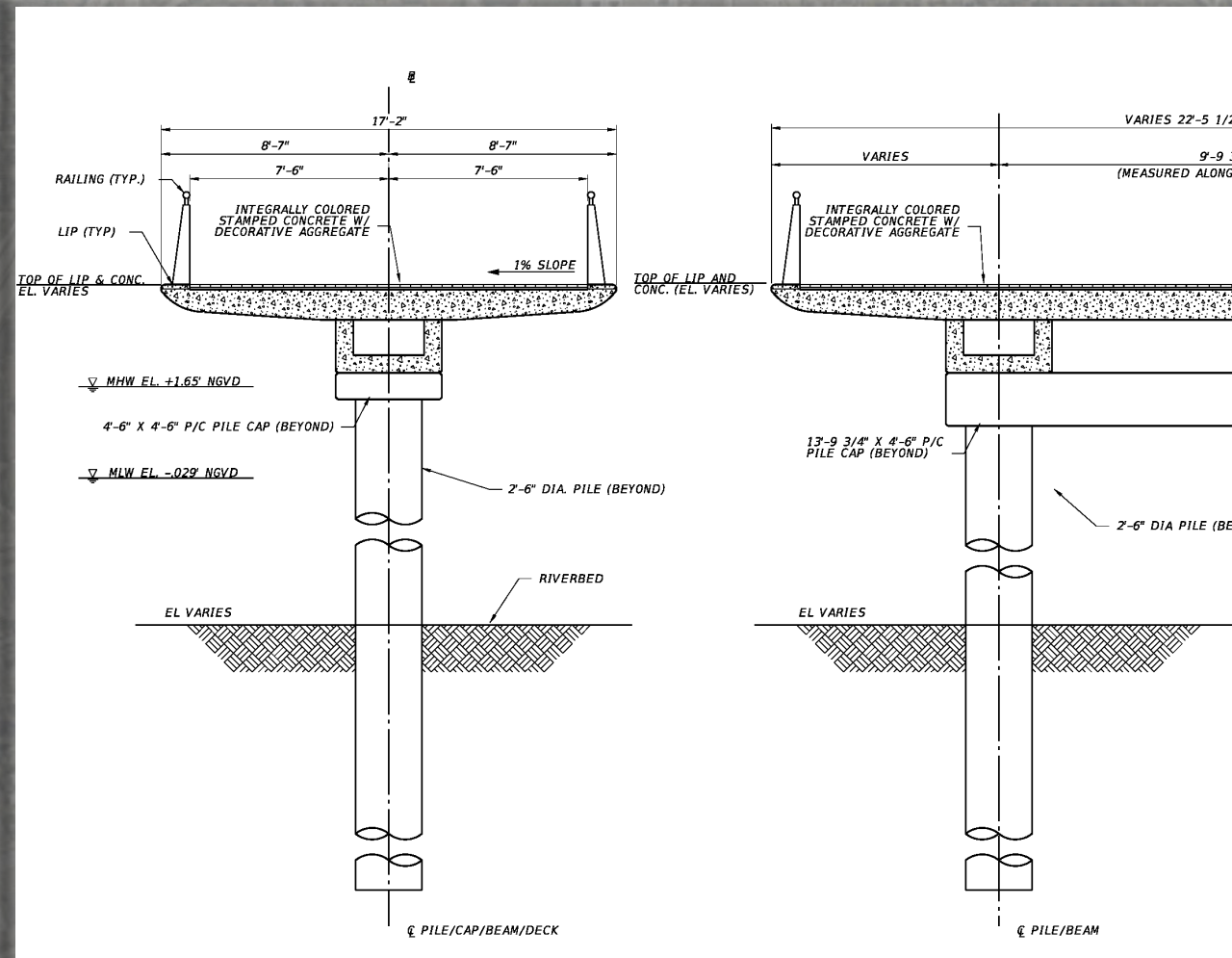


An aerial architectural rendering of a proposed riverwalk and living shorelines project. The scene shows a wide river with a modern bridge featuring a white railing and a walkway. On the left bank, there's a paved area with trees and a building with a 'Publix' sign. The right bank features a paved walkway, several white event tents, a tennis court on a raised wooden platform, and lush greenery. People are depicted walking, jogging, and playing tennis. The overall atmosphere is bright and sunny.

# Riverwalk, Trail and Living Shorelines



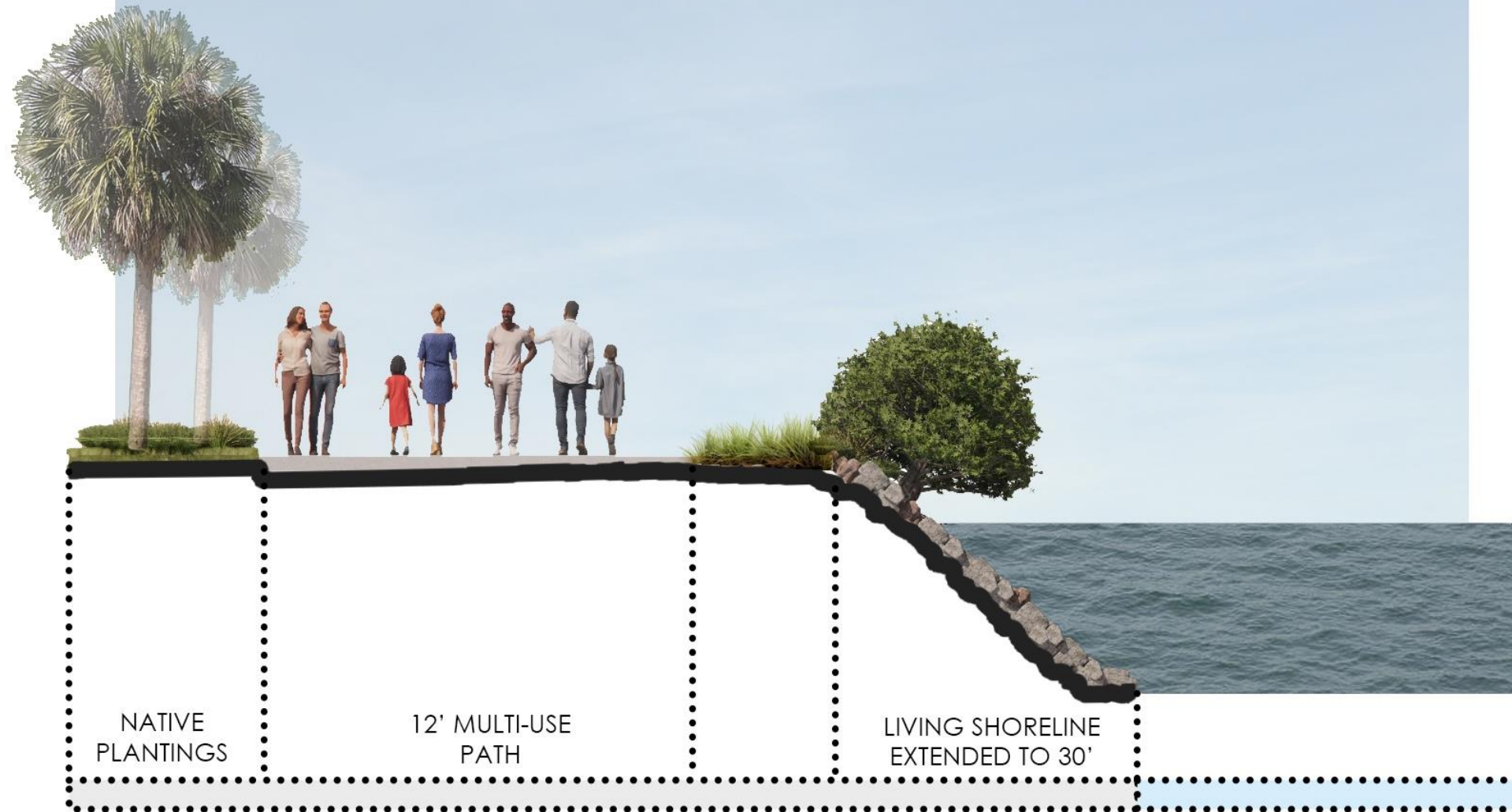




Platt and Brorein Underpass **Pedestrian Bridges**



## Trail Design





## Living Shorelines Design Intent



*Resiliency*



*Wave Dissipation*



*Public Access and Interaction*





Plant Park (Future Interface w/private developer at the Brick Plaza)





University of Tampa





Ridgewood Park



# Public Engagement





# Developed Community Awareness Plan: Identified Key Stakeholders



**Develop Communications Plan**



**Identify Key Community Stakeholders — Residents, Local Businesses, Government Agencies**



**Grassroots Outreach — Early & Continuous Engagement**



**Identify Potential Public Concerns**



**Conduct Public Meetings — One-On-One Virtual | In-Person | Hybrid**



**Public Involvement...**

*"Creating opportunities to engage, educate, inform, and to gain valuable input from the community."*



# Some Key Stakeholders for This Project



## Local Agencies:

- ~ Tampa – Hillsborough Expressway Authority
- ~ Hillsborough County



## Municipal:

- ~ City of Tampa



## Organizations:

- ~ Greater Tampa Chamber of Commerce



## Transit:

- ~ HART



## Education:

- ~ Dunbar Elementary Magnet School
- ~ Gorrie Elementary
- ~ Just Elementary School
- ~ Stewart Middle School
- ~ Blake High School
- ~ Icon Preparatory School Tampa Preparatory School
- ~ University of Tampa



## First Responders:

- ~ Local Law Enforcement
- ~ Local Fire Rescue | EMS



## Community Centers/Parks & Recreation:

- ~ Plant Park
- ~ Platt Street Underpass
- ~ Tony Jannus Park
- ~ Plant Park

- ~ Gaslight Park
- ~ Riverside Garden Park
- ~ Herman Massey Park
- ~ Martin Luther King Jr. Recreation Center



## Nearby Places of Interest:

- ~ Tampa Riverwalk
- ~ Armature Works Restaurants
- ~ Tampa Convention Center
- ~ David A. Straz Jr. Center for the Performing Arts
- ~ Ulele Restaurant
- ~ Tampa Museum of Art
- ~ Curtis Hixon Waterfront Park
- ~ Glazers Children's Museum
- ~ Cass Street
- ~ Water Works Park
- ~ Amalie Arena
- ~ Gold Star Families Memorial Monument
- ~ Tampa Theatre
- ~ Kiley Gardens



## HOA's/Residential Communities:

- ~ West Tampa Community Redevelopment Association
- ~ Tampa Heights Neighborhood Association (Mr. Brian Seel)
- ~ Ridgewood Park CPCA, Inc. (Ms. Katy Alderman)
- ~ Downtown River Arts Neighborhood



## Additional Stakeholders:

- ~ USPS
- ~ Businesses along project segment
- ~ Micromobility Vendors
- ~ Courtyard Marriott – Downtown Tampa
- ~ Aloft Tampa
- ~ Hilton Downtown Tampa
- ~ Tampa Housing Authority
- ~ Tampa Housing Authority Bridges Collaborative – Reading & Learning Center
- ~ West Tampa Neighborhood Service Center
- ~ Columbus Court
- ~ West River Flats
- ~ Mary Bethune West River
- ~ The Vintage Lofts – At West End
- ~ The Gray
- ~ Havana Square
- ~ Places of Worship
- ~ Trash | Recycling Service Providers



## Marine:

- ~ US Coast Guard (USCG)
- ~ Fish and Wildlife Commission
- ~ Port Tampa Bay
- ~ Department of Environmental Protection

Association (Mr. Daniel Traugott)



# All Inclusive Public Engagement

Verbal and written translations will be provided for this project.

Project Segments	Hispanic Population	Spanish Speaking at Home
<b>Segment 1:</b> Multimodal Path from Platt Street to Brorein Street	<b>13%</b>	<b>12%</b>
<b>Segment 2:</b> Multimodal Path from Kennedy Boulevard to Palmetto Street/Rome Avenue	<b>18%</b>	<b>16%</b>
<b>Segment 3:</b> Platt Street from Rome Avenue to Bayshore Boulevard	<b>13%</b>	<b>9%</b>
<b>Segment 4:</b> Rome Avenue from Platt Street to Columbus Drive	<b>25%</b>	<b>15%</b>
<b>Segment 5:</b> Columbus Drive from Rome Avenue to North Boulevard	<b>36%</b>	<b>15%</b>
<b>Segment 6:</b> Ridgewood Park from Columbus Drive to North Boulevard	<b>33%</b>	<b>19%</b>

(Note: Valerin uses the EPA's Environmental Justice Screening Tool to determine the need for written and verbal translations – this has been identified for each project segment above.)





© 2010 Blackwell Publishing Ltd, *Journal of Internal Medicine* 267: 103–110





# Project Schedule





---

## In-Water Permitting Status

- ✓ **Living Shorelines – permit received**
- ✓ **Bridge Underpasses & Overlook (Q1 - 2026)**



## Sequential Constructional Starts...

- ✓ **Segment 1 - Demo**      **mid-Nov start date**
- ✓ **Segment 1 -  
Living Shorelines  
(south of Platt)**      **Dec start date**
- ✓ **Segments 2,3 & 6**      **Jan / Feb start date**
- ✓ **Segment 4 & Bridges**      **Feb / Mar start date**
- ✓ **Segment 5**      **May / Apr start date**



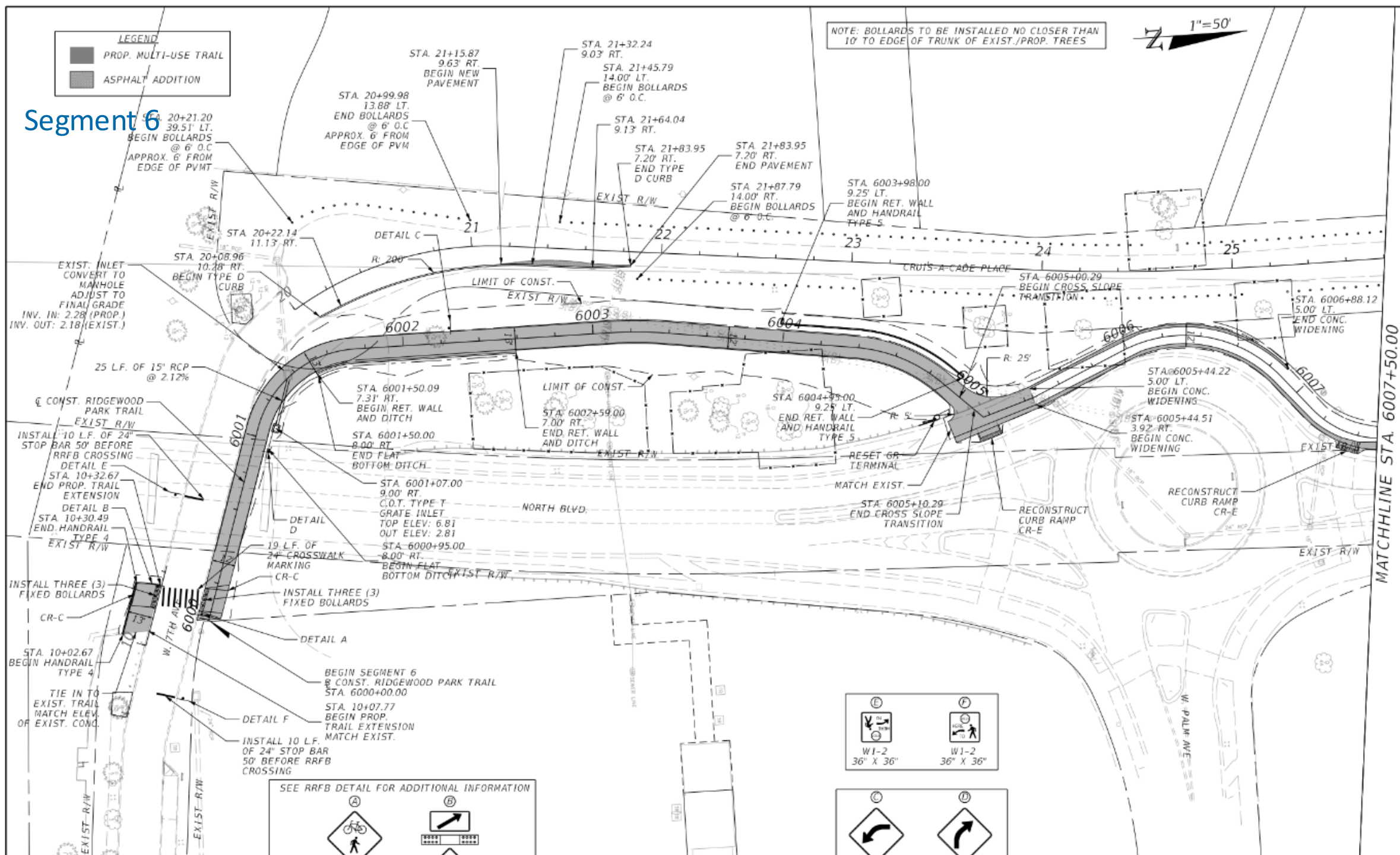


*City of  
Tampa  
Florida*





## Segment 6



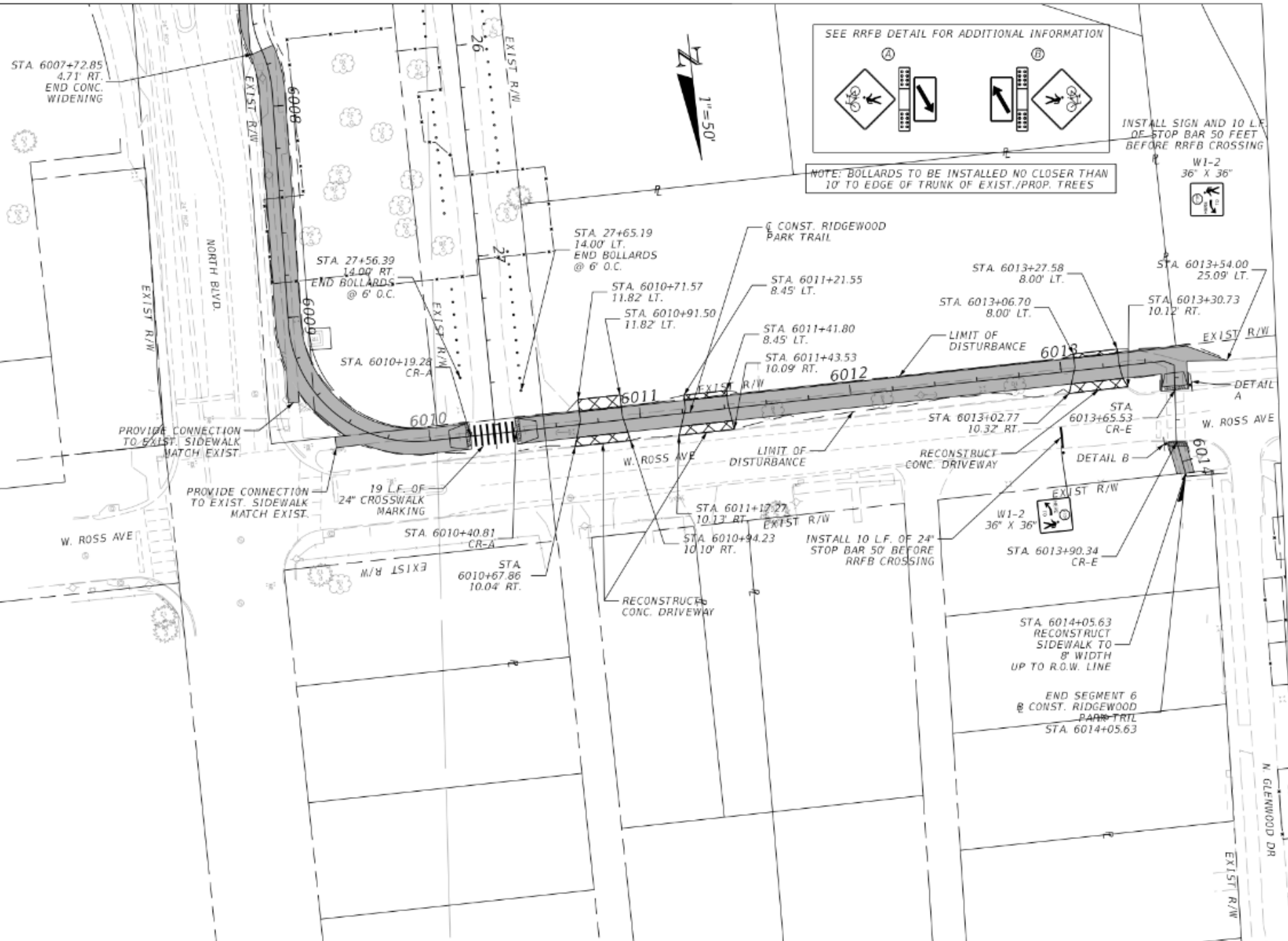
MATCHLINE STA. 6007+50.00



## Segment 6



W1-2  
36" X 36"  

ORD OF THIS SHEET IS THE ELECTRONIC FILE DIGITALLY SIGNED AND SEALED UNDER RULE 61G15-23.004, F.A.C.



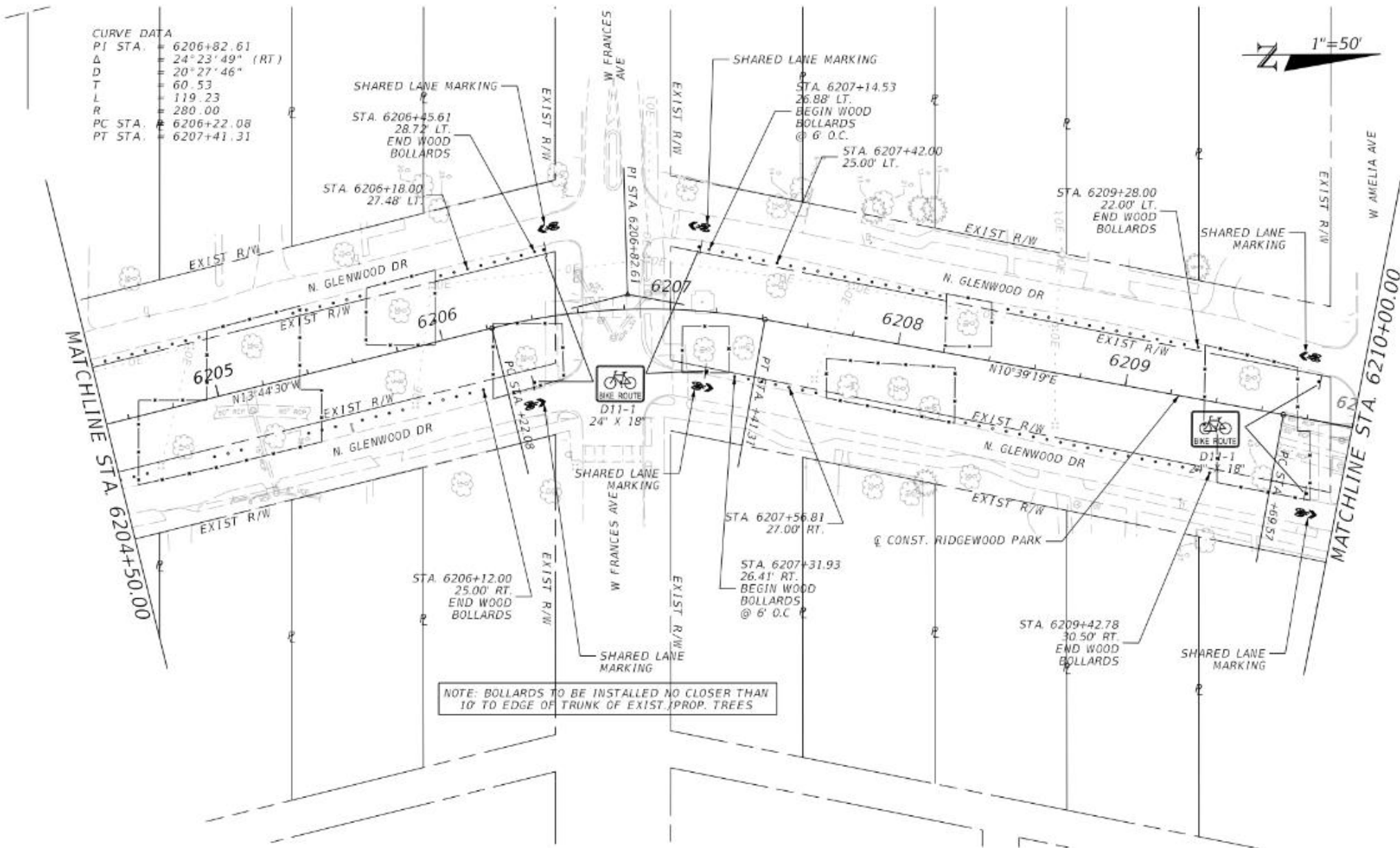
CURVE DATA  
 PI STA. = 6203+62.10  
 Δ = 16°22'16" (LT)  
 D = 14°19'26"  
 T = 57.54  
 L = 114.29  
 R = 400.00  
 PC STA. = 6203+04.57  
 PT STA. = 6204+18.86



REVISIONS				ENGINEER OF RECORD	CITY OF TAMPA MOBILITY DEPARTMENT			TRAIL PLAN (3)	SHEET NO.
DATE	DESCRIPTION	DATE	DESCRIPTION	ARIEL P. ELVANBUENA, P.E. LICENSE NUMBER: 66657 GRESHAM SMITH 3615 BROMLEY GRAND AVENUE, SUITE 320 TAMPA, FL 33607	CITY	CONTRACT NO.	FED. AGREEMENT NO.		
						TAMPA	22-C-00001	693JJ32240004	RIDGEWOOD PARK

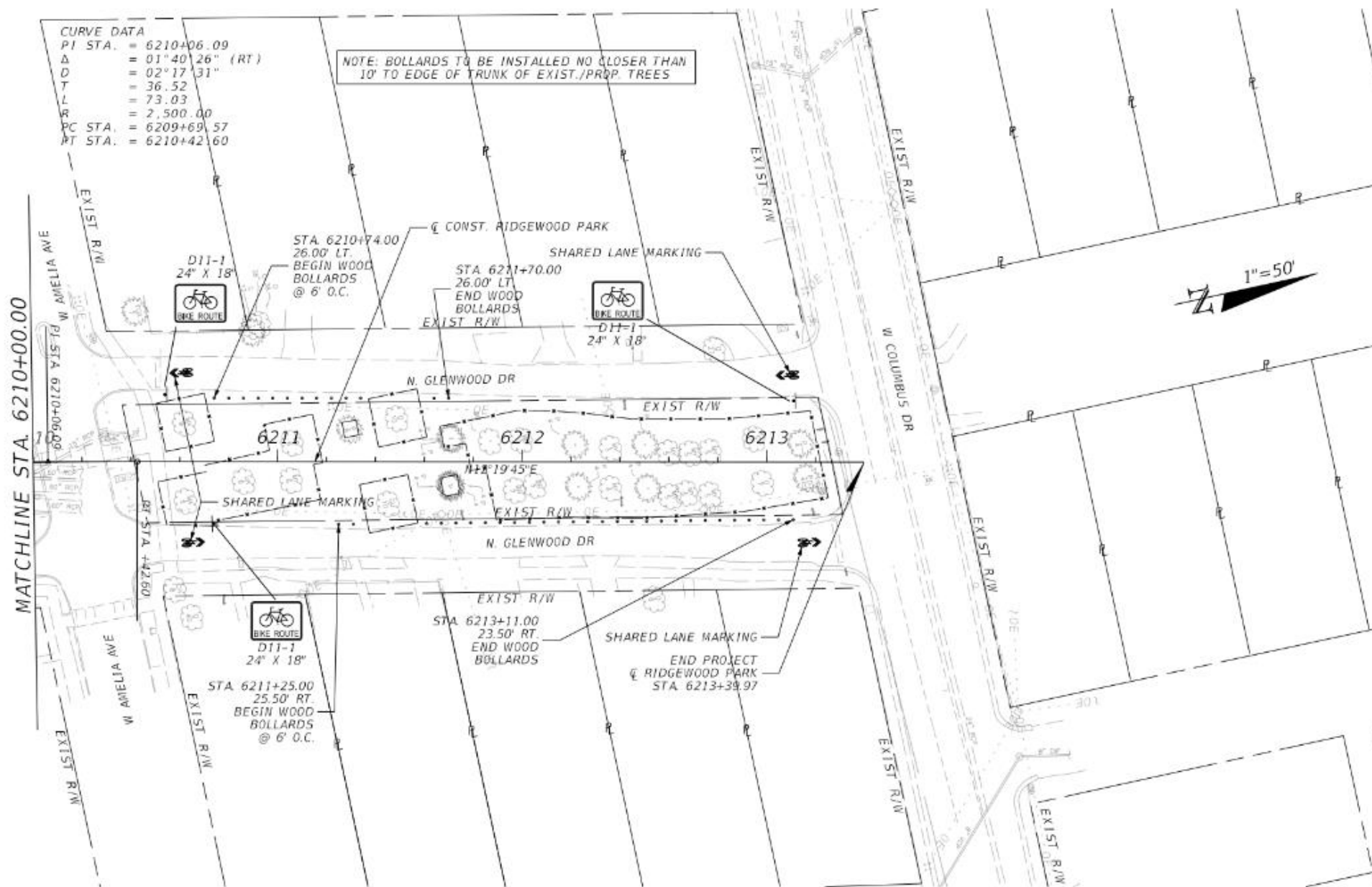


Segment 6





## Segment 6





# PHASING NOTES

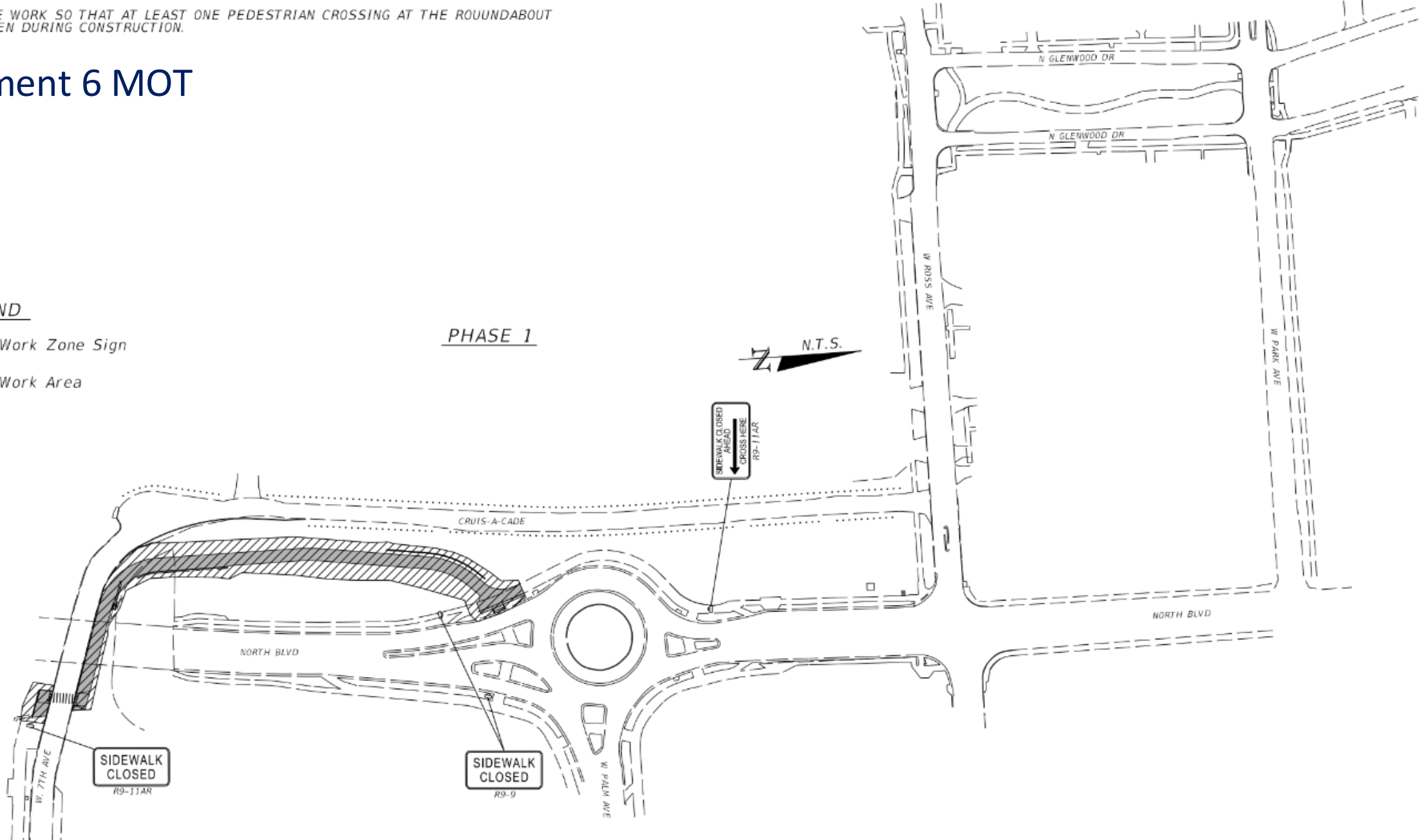
1. INSTALL TRAFFIC CONTROL DEVICES, PORTABLE CHANGEABLE MESSAGE SIGNS, TEMPORARY SIGNING AND EROSION AND SEDIMENT CONTROL DEVICES IN ACCORDANCE WITH FDOT STANDARD PLANS INDEX 102-600.
2. CONSTRUCT TRAIL PER LIMITS SHOWN ON PLAN SHEET.
3. PHASE WORK SO THAT AT LEAST ONE PEDESTRIAN CROSSING AT THE ROUNDABOUT IS OPEN DURING CONSTRUCTION.

## Segment 6 MOT

### LEGEND

- Work Zone Sign
- Work Area

### PHASE 1





PHASING NOTES

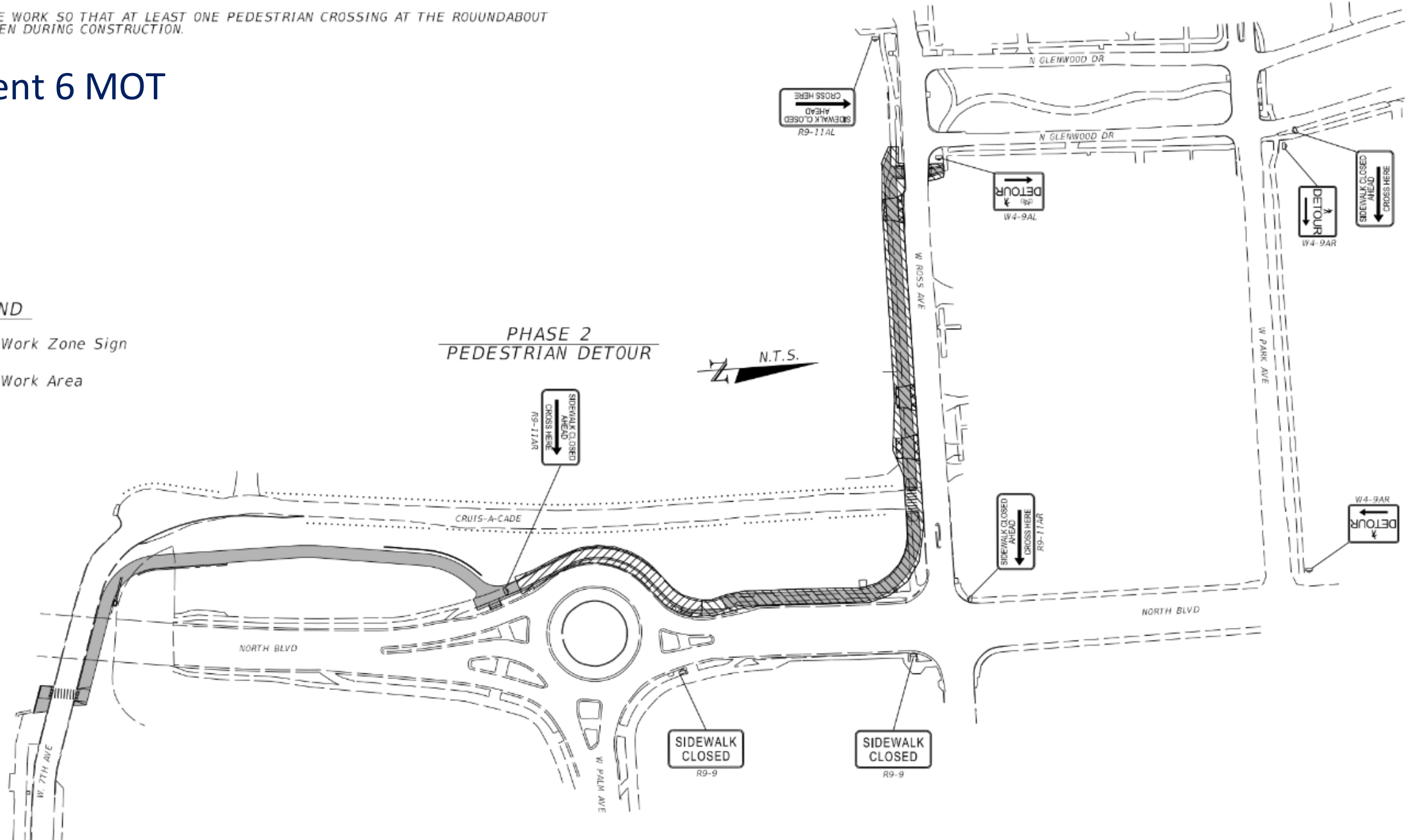
1. INSTALL TRAFFIC CONTROL DEVICES, PORTABLE CHANGEABLE MESSAGE SIGNS, TEMPORARY SIGNING AND EROSION AND SEDIMENT CONTROL DEVICES IN ACCORDANCE WITH FDOT STANDARD PLANS INDEX 102-600.
2. CONSTRUCT TRAIL PER LIMITS SHOWN ON PLAN SHEET.
3. PHASE WORK SO THAT AT LEAST ONE PEDESTRIAN CROSSING AT THE ROUNDABOUT IS OPEN DURING CONSTRUCTION.

## Segment 6 MOT

LEGEND

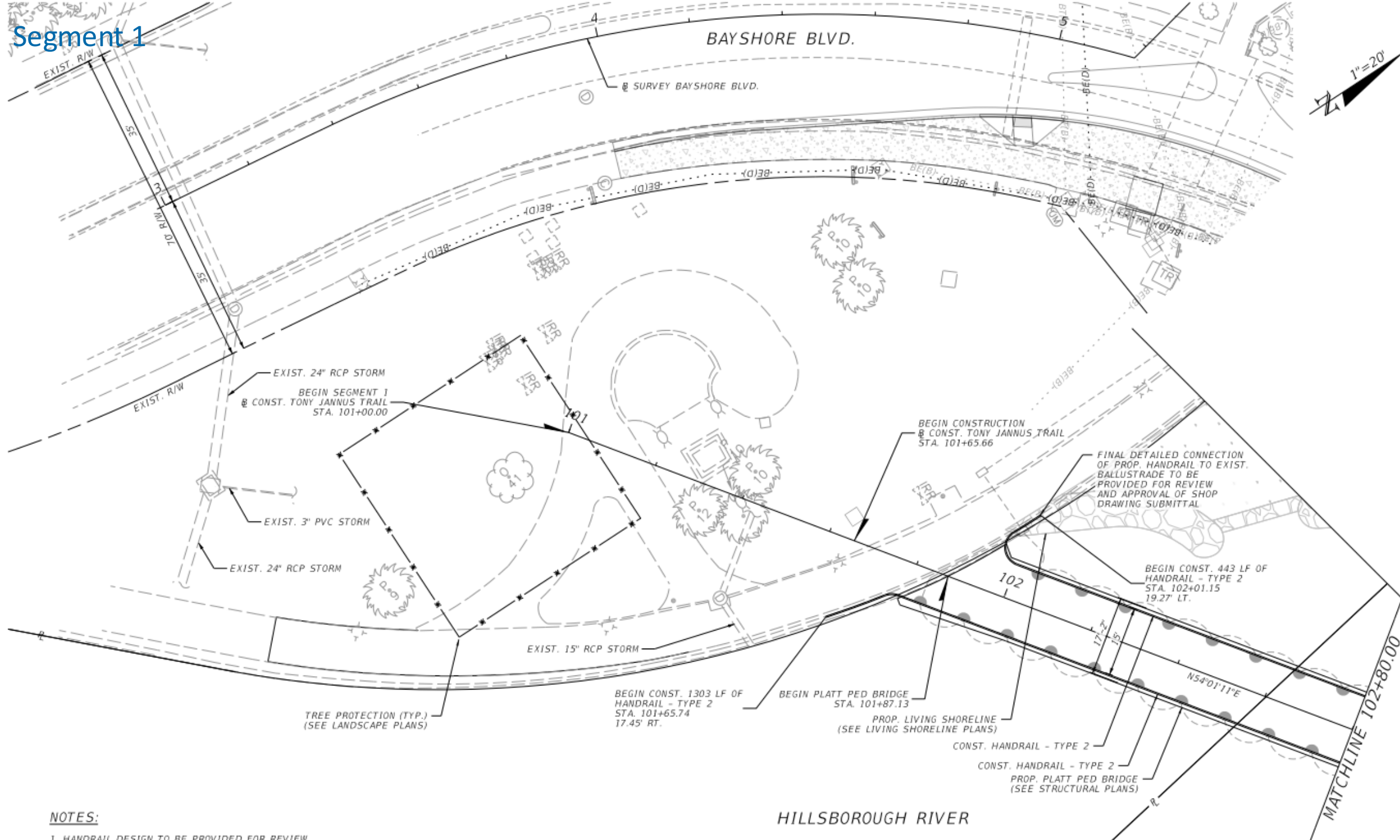
Work Zone Sign

Work Area





# Segment 1

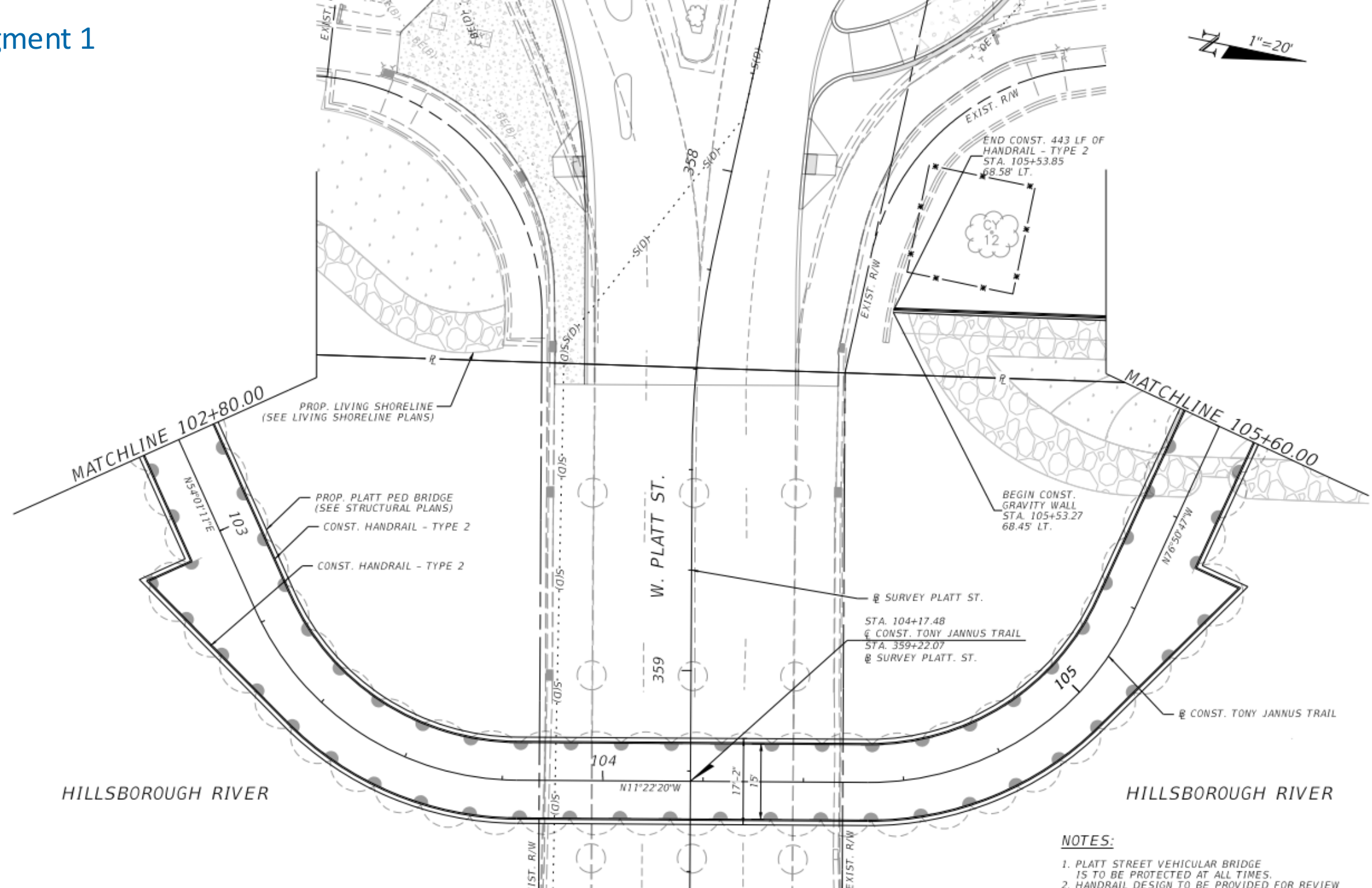


## NOTES:

1. HANDRAIL DESIGN TO BE PROVIDED FOR REVIEW

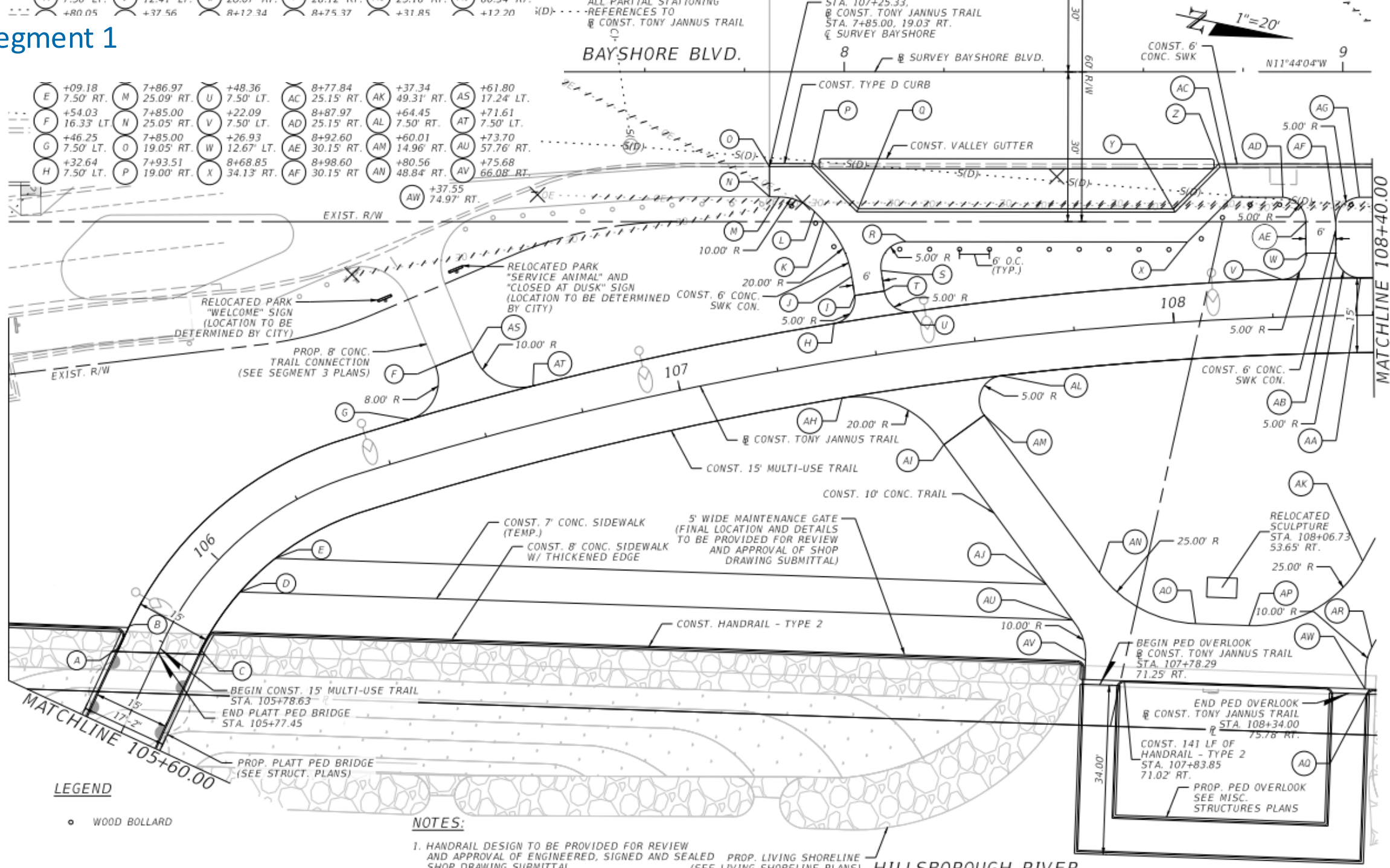


## Segment 1





# Segment 1





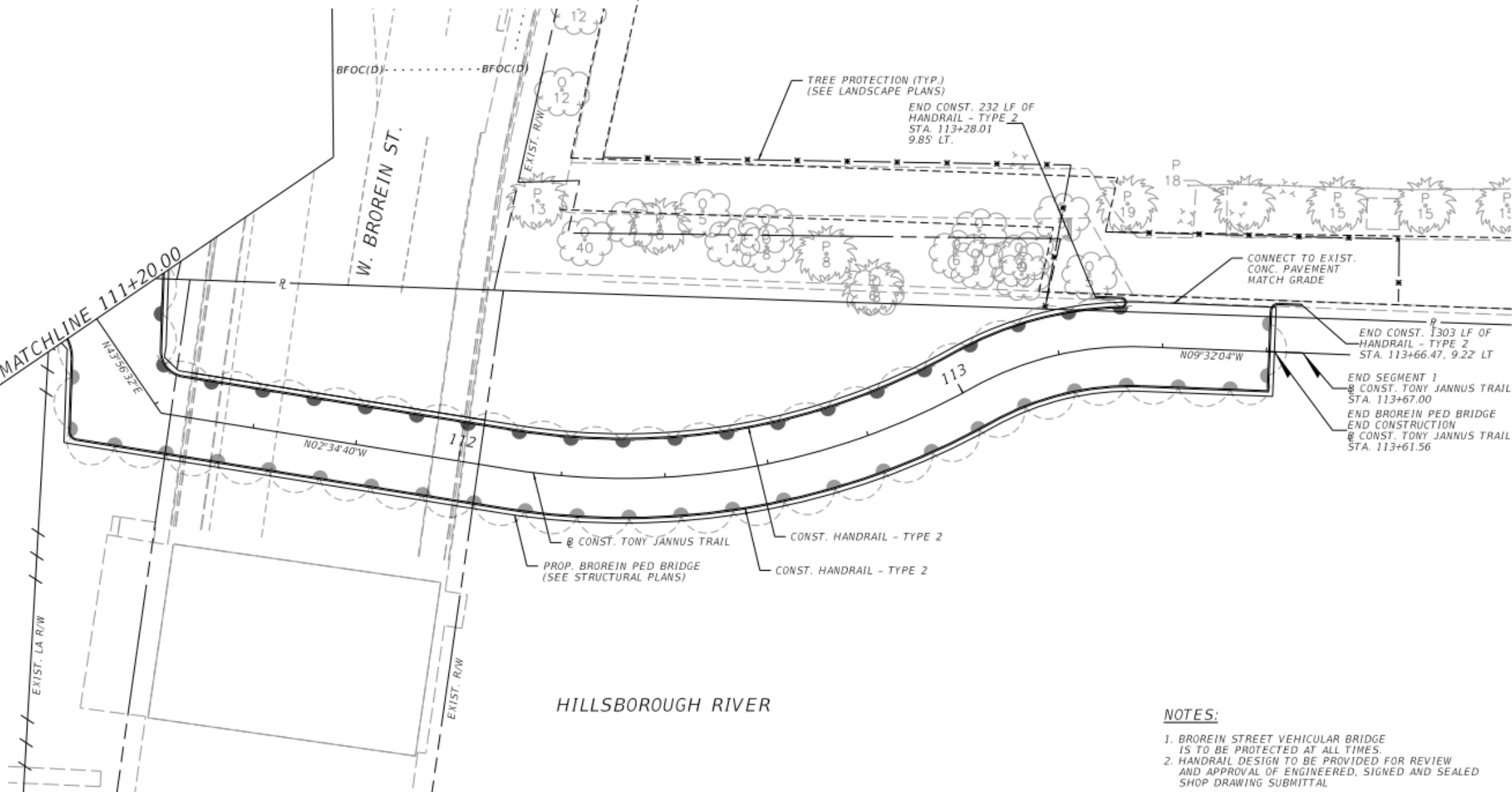
1



REVISIONS				ENGINEER OF RECORD		CITY OF TAMPA MOBILITY DEPARTMENT			PLAN (4)	SHEET NO.
DATE	DESCRIPTION	DATE	DESCRIPTION	OLIVER P. SHAHBAZIAN P.E. LICENSE NUMBER: 85606 THE HASKELL COMPANY 705 SAN MARCO AVENUE, SUITE 1400 TAMPA, FL 33606		CITY	CONTRACT NO.	FED. AGREEMENT NO.		



Segment 1





# Segment 1 MOT

